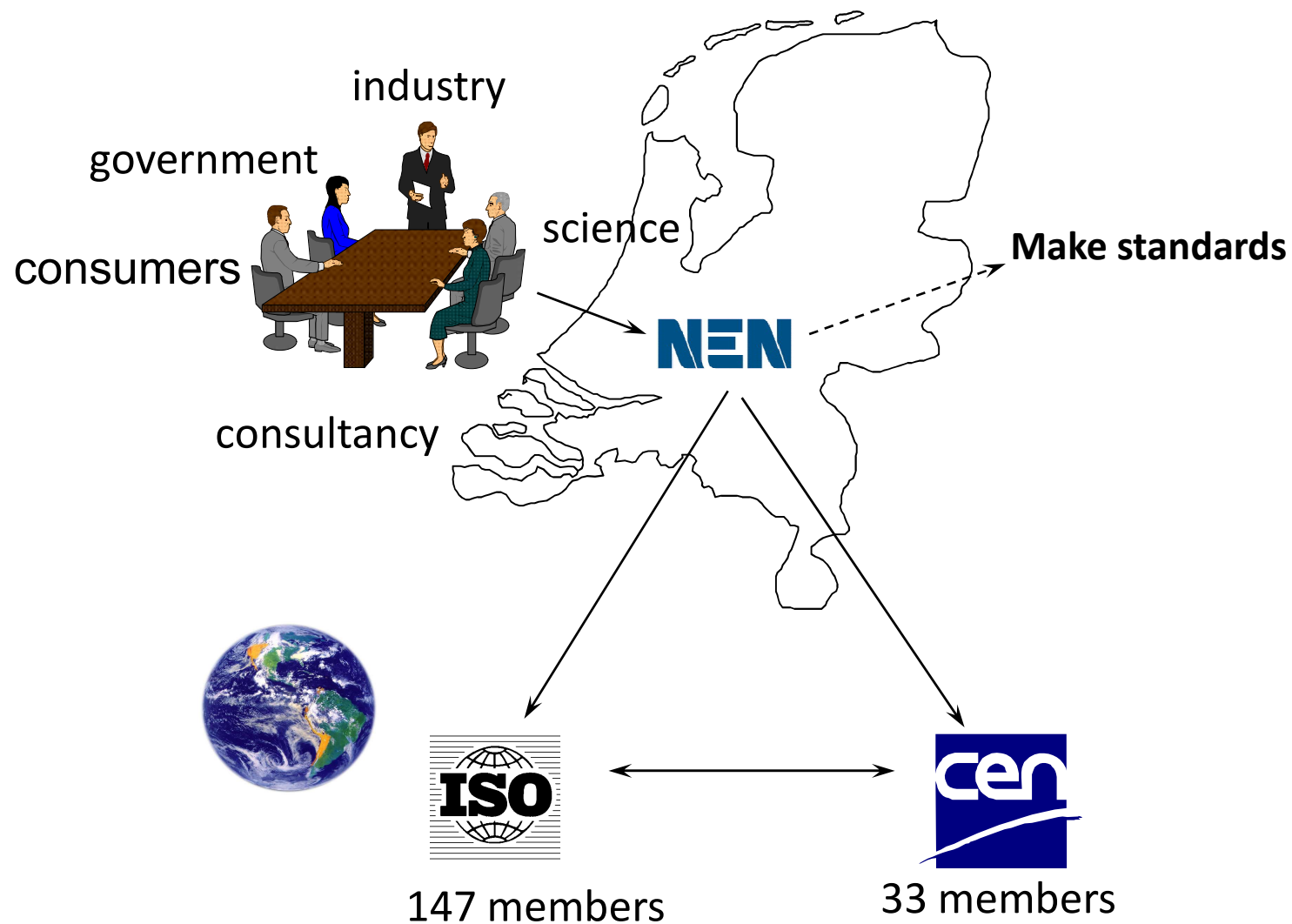


SATORI: WHAT IS THE ETHICAL IMPACT OF MY R&I PROJECT

**CWA 17145-2 ETHICS ASSESSMENT OF RESEARCH AND INNOVATION
- ETHICAL IMPACT ASSESSMENT FRAMEWORK**

18 May 2017
NEN, Cork

NEN part of CEN and ISO network



SATORI OBJECTIVES

Improve and harmonize ethics assessment practices

- klajsdklfja
- assess the standardization potential of ethics assessment
 - Learning-by-doing methodology
 - develop a SATORI CWA on ethics assessment for research and innovation

When to develop a CEN Workshop Agreement (CWA) ?



- ✓ Emerging or rapidly-changing technologies that require quickly-developed specifications;
- ✓ To present the outcome of research projects (especially European ones);
- ✓ In those areas where a need for ENs is not yet perceived;
- ✓ As try-out before the development of ENs
- ✓ Is a flexible working platform
- ✓ Is open to the participation of any company or organization, inside or outside Europe



CWA SATORI WORK PLAN: 9 STEPS

Approval from CEN/TC 389 Innovation management

1. **CWA SATORI Kick-off meeting** 2015-09
2. Survey on relevant source materials 2015-10
3. **Project team framework meeting** 2016-02
4. Report results project team 2016-04
5. **Plenary meeting – internal review** 2016-05
6. Internal review: ethics assessment framework 2016-07
7. Draft CWA - public comment phase 2016-09-11
8. **Plenary meeting comment resolution** 2017-01
9. Publication CWA SATORI 2017-05

SATORI –CWA 17145 - SCOPE

This CEN Workshop Agreement sets requirements and provides guidelines for ethics assessment of research and innovation.

The CWA aims to improve the quality of ethics assessment and harmonize ethics assessment practices.

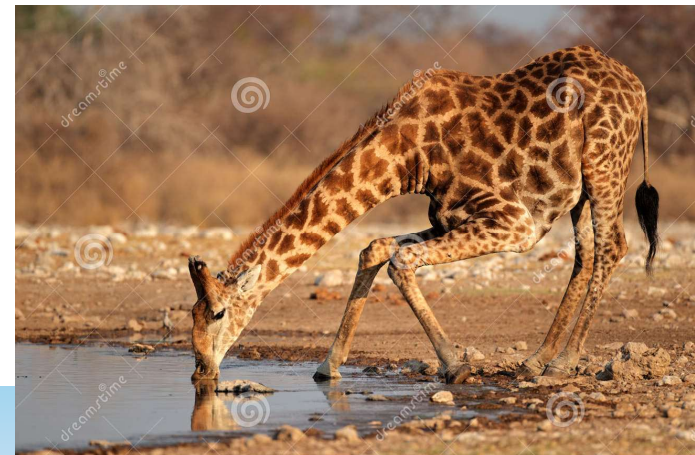
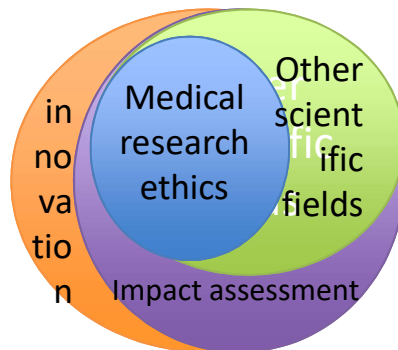
The CWA applies to organizations or agents involved in performing, commissioning, funding or assessing research and innovation, and therefore have a responsibility to address ethical issues.

Part 1 – ethics committee

Part 2 – ethical impact assessment framework

CHALLENGES : WHAT TO INCLUDE IN THE ETHICS ASSESMENT FRAMEWORK CWA?

- Ethics assessment including ethical impact assessment
- Ethics committee vs researcher
- Prevention vs promotion
- Guidance vs certification
- SATORI



INSPIRATION FOR BUILDING THE FRAMEWORK

- SATORI research results
 - Ethical issues and principles
 - EA procedures
 - EA framework
 - Guidelines supporting ethical behaviour
 - Research and innovation
 - EA model in Universities
 - EA model in CSO's
 - EA model in industry
- ISO 26000 Corporate Social Responsibility
- ISO 31000 Risk management
 - Assessment = identification+analysis+evaluation
- ISO 9001 Quality management
 - 1 Scope
 - 2 Terms and definitions
 - 3 Context of ethics assessment
 - 4 Leadership and commitment
 - 5 Planning
 - 6 Support
 - 7 Operation
 - 8 Performance evaluation
 - 9 Improvement



PART 2: ETHICAL IMPACT ASSESSMENT FRAMEWORK

process of judging the ethical impacts of research and innovation activities, outcomes and technologies that incorporates both means for a contextual identification and evaluation of these ethical impacts and translation into a set of guidelines or recommendations for remedial actions aiming at mitigating ethical risks and enhancing ethical benefits, typically in consultation with stakeholders

CWA 17145-2

ETHICAL IMPACT ASSESSMENT FRAMEWORK

1. Scope
2. Terms and definitions
3. Ethical impact assessment framework
4. Conduct an EIA threshold analysis
5. EIA plan
6. Ethical impact Identification
7. Ethical impact evaluation
8. Remedial actions
9. Review and audit of the EIA

Annex A: Ethical issues

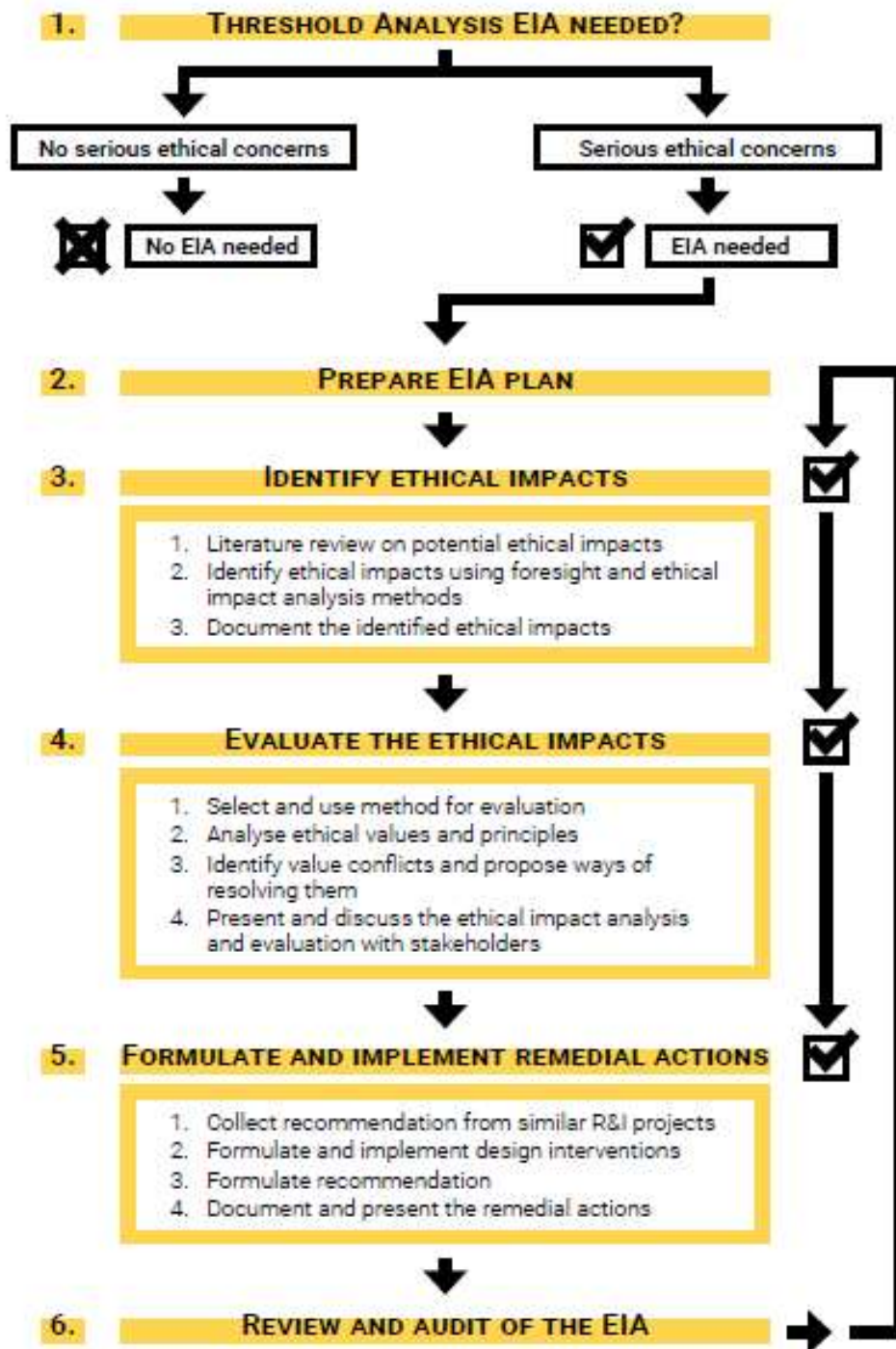
Annex B: Technology scale EIA

Annex C: Technology Readiness Level methodology

Annex D: Foresight methods

Annex E: Methods for ethical impact analysis

Are there ethical issues ?	1	2	3	4	5	specify
impact on public health or safety?						
involve the collection, processing, storing and/or transfer of personal data?						
live impact on the rights and liberties of individuals and groups?						
impact in terms of social justice and equality?						
impact on the well-being of individuals or groups, a the common good, cultural heritage?						
Impact on the environment, animals and/or plants, including through the use of GMOs?						
Impact in terms of sustainable development?						
military purposes (dual use)?						
subject to misuse?						



ETHICAL IMPACT ASSESSMENT FRAMEWORK

FORESIGHT METHODOLOGIES IN EIA

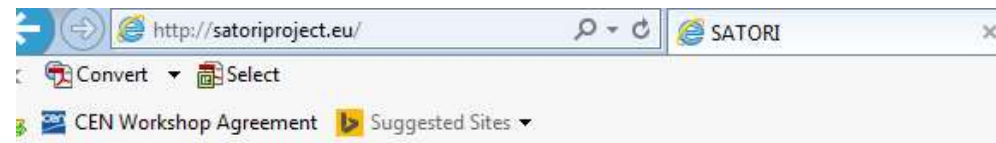
	Evidence	Expertise	Interaction	Creativity
Tools	Horizon scanning; Trend analysis	Expert consultation; Delphi interviews	Stakeholder consultation; Brainstorming; Futures wheel; Citizen panels	Roadmapping; Scenario writing

EIA

- Combination of methodologies from different knowledge sources
- Importance of stakeholder engagement
- To develop the products/services that people/society wants

QUESTIONS & DOCUMENTS

- <http://satoriproject.eu>
- Marlou.bijlsma@nen.nl



Stakeholders
Acting Together
On the ethical
impact assessment
of Research and
Innovation

ABOUT SATORI

NEWS & MEDIA

RESULTS

EVENTS

RESOURCES



CWA PART 1- ETHICS COMMITTEE

1. Scope
 2. Terms and definitions
 3. Ethics assessment unit
 4. Ethical issues and principles
 5. Procedures for ethics assessment
 6. Quality assurance in ethics assessment
- Annex A: Basic ethical principles
- Annex B: Field specific ethical principles
- Annex C: Conflicting ethical principles
- Annex D: Risk based thinking in ethics assessment
- Annex E: Guidelines for PDCA in ethics assessment

CEN

WORKSHOP

AGREEMENT

CWA 17145-1

May 2017

ICS 03.100.02; 03.100.40

English version

Ethics assessment for research and innovation - Part 1:
Ethics committee

This CEN Workshop Agreement has been drafted and approved by a Workshop of representatives of interested parties, the constitution of which is indicated in the foreword of this Workshop Agreement.

The formal process followed by the Workshop in the development of this Workshop Agreement has been endorsed by the National Members of CEN but neither the National Members of CEN nor the CEN-CENELEC Management Centre can be held accountable for the technical content of this CEN Workshop Agreement or possible conflicts with standards or legislation.

This CEN Workshop Agreement can in no way be held as being an official standard developed by CEN and its Members.

This CEN Workshop Agreement is publicly available as a reference document from the CEN Members National Standard Bodies.

CEN members are the national standards bodies of Austria, Belgium, Bulgaria, Croatia, Cyprus, Czech Republic, Denmark, Estonia, Finland, Former Yugoslav Republic of Macedonia, France, Germany, Greece, Hungary, Iceland, Ireland, Italy, Latvia, Lithuania, Luxembourg, Malta, Netherlands, Norway, Poland, Portugal, Romania, Serbia, Slovakia, Slovenia, Spain, Sweden, Switzerland, Turkey and United Kingdom.



EUROPEAN COMMITTEE FOR STANDARDIZATION
COMITÉ EUROPÉEN DE NORMALISATION
EUROPAISCHES KOMITEE FÜR NORMUNG

CEN-CENELEC Management Centre: Avenue Marnix 17, B-1000 Brussels

© 2017 CEN All rights of exploitation in any form and by any means reserved worldwide for CEN national Members.

Ref No.: CWA 17145-1:2017 E